



Océ

CS2224

CS2236

CS2236MF

Presenting your
colorful ideas



Wide format color
systems to maximize
your design assets

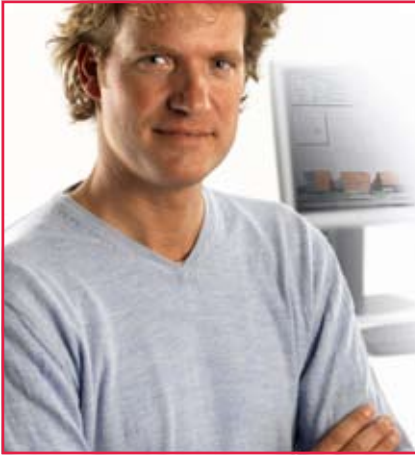
- Océ green button operation
- Excellent sharpness and legibility
- Reliable and on time
- Consistent output
- Versatile media handling
- Meets future needs

Presenting your colorful ideas



Océ CS2224 / CS2236 / CS2236MF

Wide format color systems to maximize your design assets



CAD designer

Clear communication even under pressure

Strong, clear presentation is vital for my designs. So I won't compromise on output quality, even with tough deadlines. That's no problem with the Océ CS2236MF multifunctional.

- My prints, copies and scans, color or monochrome, are always right first time, thanks to Océ green button operation
- I always get excellent sharpness and legibility, even on plain paper
- My jobs are done reliably and on time, whether it's digital or hard copy

These economical devices are the fast, easy way to get your plans and technical information on paper. Whether it's engineering designs and drawings, architectural plans or GIS plots, you'll see the difference in sharpness and clarity. You can choose from printing widths of 24 or 36 inches or a multifunctional for quick, convenient copying and scanning of hard copy drawings. Each system will maximize the results of your design assets.

Wide format color systems to maximize your design assets



	Océ CS2224	Océ CS2236	Océ CS2236MF
Océ green button operation			
Océ predefined print and color settings	Yes	Yes	Yes, and for copying and scan to file
Ink level and media monitoring	Yes, in driver and web browser	Yes, in driver and web browser	Océ Copy Easy: media monitoring via back channeling with printer
Excellent sharpness and legibility			
Océ media profiles	Yes	Yes	Yes, and copy profiles
4 colors	Océ wide gamut dye inks: cyan, magenta, yellow, black Océ high density pigment ink: black		
Number of ink tanks	6 (cyan, magenta, yellow, black: 1 × ink tank; pigment black: 2 × ink tank)		
Resolution	2,400 × 1,200 dpi	2,400 × 1,200 dpi	Optical resolution scanner: 508 dpi
Drop size	4 pl	4 pl	4 pl
Ink tank size	130 ml	130 ml	130 ml
Reliable and on time			
Automatic adjustment	<ul style="list-style-type: none"> Print head height Color calibration 	<ul style="list-style-type: none"> Non-firing nozzle detection and compensation Media feed 	
Max. printing speed	0.6 min per A1	56 sec per Ao	Scan speed 200 dpi 24-bit color: 0.9 m/min
Consistent output			
Automatic loading of Océ media profiles	Yes	Yes	Yes, and copy profiles
Automatic application of Océ print and color settings	Yes	Yes	Yes, and copy settings
Versatile media handling			
Max. media width	Max. 610 mm	Max. 914 mm	Scan width 914 mm Original width 1117 mm
Max. media thickness	0.8 mm	0.8 mm	Original: 15 mm
Media feed	Roll and sheet Cassette: 0.08–0.3 mm	Roll and sheet	Original feed: central
Max.. roll length	120 m, outer diameter roll < 150 mm		
Meets future needs			
RIP	Bundled: Onyx CADPro RIP for HPGL/2 files and other file formats Optional: Upgrade to Onyx GraphicsPro for PS files	Bundled: Onyx CADPro RIP for HPGL/2 files and other file formats Optional: Upgrade to Onyx GraphicsPro for PS files	Bundled: Onyx CADPro RIP for HPGL/2 files and other file formats Optional: Upgrade to Onyx GraphicsPro for PS files Upgrade Océ Copy Easy to Océ Color Copy

Océ CS2224 / CS2236 / CS2236MF

Specifications

	Océ CS2236 printer	Océ CS2224 printer
Technology	Thermal inkjet	Thermal inkjet
Print head	Integrated semi-permanent 15,360 nozzles	Integrated semi-permanent 15,360 nozzles
4 colors	Cyan, magenta, yellow, black	Cyan, magenta, yellow, black
5 inks	Océ large color gamut dye ink: cyan, magenta, yellow, black Océ high density pigment ink: black	Océ large color gamut dye ink: cyan, magenta, yellow, black Océ high density pigment ink: black
Max. printing resolution	2,400 × 1,200 dpi	2,400 × 1,200 dpi
Size of ink tanks*	130 ml per color (2 × high density black)	130 ml per color (2 × high density black)
Ink level monitoring	Ink level indication Out of ink notice	Ink level indication Out of ink notice
Color modes	Color, B&W/grayscale	Color, B&W/grayscale
Quality modes	Draft, standard, high, highest	Draft, standard, high, highest
Printing speed	Max. 56 sec per Ao (concept CAD)	Max. 0.6 min per A1
Stand	Included	Included
Standard interface	Ethernet 10 BaseT/100BaseTX USB 2.0 Hi Speed	Ethernet 10 Base T/ 100BaseTX USB 2.0
Standard accessory	1 printhead 6 ink tanks (cyan, magenta, yellow, black, 2 × high density black) 90 ml per ink tank 1 roll holder 2-inch 1 cutter 1 maintenance cartridge Onyx CADPro Power cable 1 roll Océ premium paper 36-inch	1 printhead 6 ink tanks (cyan, magenta, yellow, black, 2 × high density black) 90 ml per ink tank 1 roll holder 2-inch 1 cutter 1 maintenance cartridge Onyx CADPro Power cable 1 roll Océ premium paper 24-inch
Installation	User installable, installation guide and tools included	User installable, installation guide and tools included

Océ CS2236 printer

Océ CS2224 printer

Options

Additional 2-inch roll holder

Additional 2-inch roll holder



Media source

Media

1 roll
Single sheet

Media

1 roll
Sheet cassette

Media core size

2 inches

2 inches

Media thickness

0.07–0.8 mm

0.07–0.8 mm
Cassette: 0.08–0.3mm

Media types

Uncoated
Coated
Transparent paper
Polyester film
Glossy photo paper
Satin photo paper

Uncoated
Coated
Transparent paper
Polyester film
Glossy photo paper
Satin photo paper

Media sizes roll

	<i>Max.</i>	<i>Min.</i>
Width	917 mm	203 mm
Length	18,000 mm	203 mm

	<i>Max.</i>	<i>Min.</i>
Width	610 mm	203 mm
Length	18,000 mm	203 mm

Media sizes cutsheet

	<i>Max.</i>	<i>Min.</i>
Width	917 mm	203 mm
Length	1,600 mm	203 mm

<i>Cassette:</i>	<i>Max.</i>	<i>Min.</i>
Width	432 mm	203 mm
Length	594 mm	279 mm
<i>Manual:</i>	<i>Max.</i>	<i>Min.</i>
	610 mm	203 mm
	1,600 mm	279 mm

Cassette capacity

Uncoated paper: 250 sheets A4

Width detection

Automatic

Automatic

Roll length detection

Remaining amount detection

Remaining amount detection

Drawing margin roll

Leading & trailing: 3 mm
Left & right side: 3 mm

Leading & trailing: 3 mm
Left & right side: 3 mm

Drawing margin cutsheet

Leading: 3 mm
Trailing: 23 mm
Left & right side: 3 mm

Leading: 3 mm
Trailing: 23 mm
Left & right side: 3 mm

Océ CS2236 printer

Borderless printing	For roll media: photo and heavy coated paper Margin leading & trailing: 0 mm Margin left & right side: 0 mm Supported width: 10–36 inch, A4–A0, B4–B1
Maximum roll length	120 m and outer roll diameter < 150 mm
Dimensions printer with stand	Environment 1,507 (W) × 871 (D) × 1,094 (H) mm
Weight printer with stand	Approx. 64 kg
Electrical requirements	100–240 V AC (50/60 Hz)
Power consumption	Operation: 140 W or less Sleep mode: 100–115 V: 5 W or less Sleep mode: 220–240 V: 6 W or less Standby mode: 1 W or less
Noise	Operation: 54 dB or less
Safety approvals	UL, CE, TUV, CB certification FCC, IC, VCCI
Others	Energy Star, ROHS, WEEE
Driver	Drivers and RIPs Windows 2000, Windows XP, Windows Server 2003, Vista 32-bit and 64-bit, Mac OSX or later
Automated printing process	Océ predefined settings: – media – print mode – color – automatic loading of Océ media profile
Back channel communication via driver & internet browser	View job status View queue View ink level View waste ink level
Optional RIPs	Onyx GraphicsPro
Supported vector files	Onyx GraphicsPro (optional) Adds ability to output PostScript and raster files directly on printer. Includes PostScript driver for printing from Windows or MAC OS applications

Océ CS2224 printer

Borderless printing	For roll media: photo and heavy paper Margin leading & trailing: 0 mm Margin left & right side: 0 mm Supported width: 10–24 inch, A3–A1, B4–B2
Maximum roll length	120 m and outer roll diameter < 150 mm
Dimensions printer with stand	Environment 997 (W) × 991 (D) × 989 (H) mm
Weight printer with stand	Approx. 72 kg
Electrical requirements	AC: 100–120 V AC (50/60 Hz), 220–240V AC (50/60 Hz)
Power consumption	Operation: 100 W or less Sleep mode: 100–115 V: 5 W or less Sleep mode: 220–240 V: 6 W or less Standby mode: 1 W or less
Noise	Operation: 53 dB or less
Safety approvals	UL, CE, TUV, CB certification FCC, IC, VCCI
Others	Energy Star, ROHS, WEEE
Driver	Drivers & RIPs Windows 2000, Windows XP, Windows Server 2003, Vista 32-bit and 64-bit, Mac OSX or later
Automated printing process	Océ predefined settings: – media – print mode – color – automatic loading of Océ media profile
Back channel communication via driver & internet browser	View job status View queue View ink level View waste ink level
Optional RIPs	Onyx GraphicsPro
Supported vector files	Onyx CADPro (standard) Adds ability to output HPGL, HPGL/2 and HPRTL drawings directly on printer

Onyx GraphicsPro

Onyx CADPro

Supported raster files	TIFF/TIFF-IT/8&16 Bit TIFF/JPEG2000/JPEG/Native Photoshop/Kodak PhotoCD/ER Mapper/MrSID/Targa/Scitex CT/DIB/GIF/PCX/BMP	TIFF/TIFF-IT/8&16 Bit TIFF/JPEG2000/JPEG/Native Photoshop/Kodak PhotoCD/ER Mapper/MrSID/Targa/Scitex CT/DIB/GIF/PCX/BMP
Supported PostScript files	PS & EPS level 2&3/PDF/DCS 4 and 6-color separations	
Drivers Windows	Adobe PS 2&3 for applications under Windows 2000/XP/2003 Server/Vista	
Drivers Mac OS	Adobe PS 2&3 for applications under Mac OSX	
Supported font types in PostScript	PostScript 1 & 4, True Type, Multiple Master Type 1, CID, Kanji, Morisawa	
Installation	User installable: <ul style="list-style-type: none">- Quick start installation guide- Automatically creates shortcuts to Hot Folders on 1 desktop- Includes standard 6 Quick Sets (predefined print and color settings)- Installs virtual PostScript printer automatically	User installable: <ul style="list-style-type: none">- Quick start installation guide- Automatically creates shortcuts to Hot Folders on 1 desktop- Includes standard 6 Quick Sets (predefined print and color settings)
Clear intuitive user interface	Yes, no training needed	Yes, no training needed
Automated printing process	Yes <ul style="list-style-type: none">- Standard 6 Quick Sets: predefined print and color settings- Hot Folders: files dropped in the Hot Folders will be processed and printed automatically	Yes <ul style="list-style-type: none">- Standard 6 Quick Sets: predefined print settings- Standard Hot Folders: files dropped in the Hot Folders will be processed and printed automatically
Automated printing process via remote workstations	Yes, via shortcut to Hot Folders	Yes, via shortcut to Hot Folders
Open files manually when needed	Yes	Yes
Edit line thickness and color for each HPGL pen	Yes	Yes
Customize HPGL/HPGL2 settings	Yes	Yes
Print directly from PC and MAC creative application	Yes, via Hot Folders and PostScript driver	Yes, via Hot Folders
Autoscale and autorotate images	Yes	Yes

Onyx GraphicsPro

Onyx CADPro

Print queue for print jobs

Yes

Yes

Save and archive jobs

Yes

Yes

Print from history queue

Yes

Yes

Change job settings of history

Magnification

Automatic media save/nesting

Yes

Yes

Image interpolation

Yes

Yes

Job log and media usage reporting

Yes

Yes

Active printers (#)

Standard 2, up to 5

Standard 2, up to 5

Thumbnail job preview

Yes

Yes

Spot color matching

Yes

Pantone color library

Yes

Yes

ICC compliant

Yes

Yes

Océ media profile

Yes, 27

Yes, 27

Upgrade path

CADPro to GraphicsPro

Operating systems

Minimum system requirement

Windows XP Pro with latest service pack

Minimum system requirement

Windows XP Pro with latest service pack

CPU

Intel Pentium III 1.5 Ghz or higher/Athlon

Intel Pentium III 1.5 Ghz or higher/Athlon

Storage

40 Gb hard drive 1 Gb RAM

40 Gb hard drive 1 Gb RAM

Video display

1,280 × 1,024 16-bit color

1,280 × 1,024 16-bit color

USB

One port required for Security Key

One port required for Security Key

DVD-ROM

Required

Required

System configuration

Océ CS2236MF for color and monochrome printing, copying and scanning

Océ CS2236 printer

Océ CS4136 color scanner

Océ Copy Easy color and monochrome copying and scanning software

Installation

User installable, customer support guide included



Camera technology

Triple 4-linear CCDs (RGB triplets + Panchromatic B/W)
7,700 pixels per camera
48-bit color data capture
16-bit graytone data capture

Resolution

Optical: 508 dpi
Enhanced: 1,200 dpi
Stepsize: 1 dpi

Number of cameras

3

Scan accuracy

0.1% +/- 1 pixel

Scan speed

200 dpi, 24-bit full color: 0.9 m/min

Scan width

Max. 914 mm

Original width

Max. 1118 mm

Original thickness

Max. 15 mm

Original feed

Face down
Automatic width detection

Standard interface

FireWire
USB 2.0

Electrical requirements

110/220/240 V (50/60 Hz)

Power consumption

180 W

Dimensions without stand

1342 × 185 × 465 mm

Weight without stand

57 kg

Océ Copy Easy color and monochrome copying and scan to file software



Copy features

Direct ready for copying

Automatic scanner detection
No closed loop calibration required
Scanners, media and printer precalibrated
Color and monochrome output, copy & scan to file

Green button color copying

Automatic printer media type detection
Automatic printer media width detection
Standard copy profiles for 16 Océ media
Standard image enhancement for 5 original types

Original size detection

Automatic or manual

Instant copying

Printing while scanning (set original size manually)

Preview

Preview original
Preview effect of original enhancement
Preview position on roll media
Zoom in/out

Copy area of interest

Select copy area with mouse

Simple nesting

Nest multiple copies of same scan

Deskew original

Automatic deskew original

Original rewind

Configurable

Scanning features

Green button color and monochrome scanning

Standard image enhancement for 5 original types
Automatic file name increment

Supported file formats

BMP, EPS, GIF, HPR, HP-RTL, IFF, JPEG, J2K JPEG2000, PCX, PDF, PDF/A, PNG, PPM, TGA, TIFF, 6RN

General

Operating systems

Windows 2000, Windows XP, Vista 32-bit

Minimum platform

Intel Pentium IV 2.66 GHz/Atlon, 60 GB hard drive, 1 Gb RAM, Network board 100BaseT

Protection

USB dongle with software keycode

Zooming

1-1000%

Beyond the Ordinary

Building a sustainable business has always been one of our core business principles. We do this by developing products and services that add value to the document processes of our customers, while minimizing environmental impact. And we conduct our business activities in a socially responsible manner aimed at preventing health, safety and environmental risks.



Mixed Sources

Product group from well-managed forests and other controlled sources
www.fsc.org Cert no. SCS-COC-00856
© 1996 Forest Stewardship Council



This brochure is printed on the Océ CS620 on Océ Recycled Extra White paper, 200 gr/m².

Océ Wide Format Printing Systems Partners and Awards

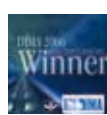


2006

2007

2008

gold



Printing for Professionals

Océ helps the people who make our world. Companies everywhere use Océ technical documentation systems in manufacturing, architecture, engineering and construction. Each week, high speed Océ printing systems produce millions of transaction documents such as bank statements and utility bills. And in offices around the world, people use Océ professional document systems to keep the wheels of business and government turning. Océ is also at work in publishing on demand, newspaper production, document management outsourcing and wide format color for spectacular display graphics. It all helps our professional customers go 'Beyond the Ordinary' in printing and document management.

Océ Operating Company name

Address

Telephone

Fax

E-mail

© 2008 Océ. Illustrations and specifications do not necessarily apply to products and services offered in each local market. Technical specifications are subject to change without prior notice. All other trademarks are the property of their respective owners.

For information and services, visit us at:

www.océ.com